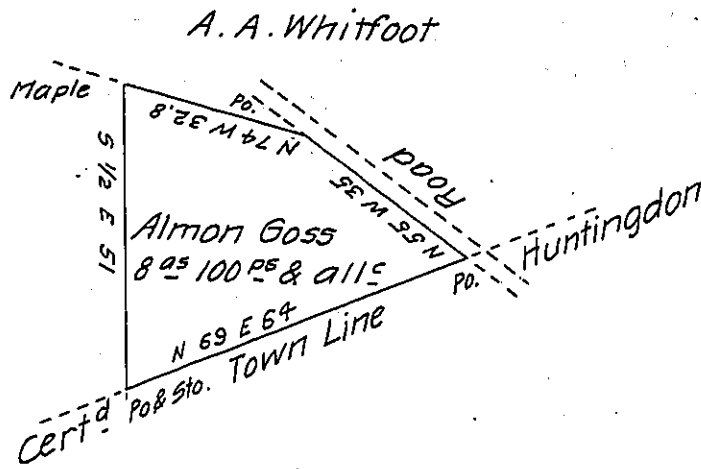


Levi Seward



Draught of a tract of unimproved land situate in the Town-
 ship of Huntingdon Luzerne County adjoining lands surveyed to
 Levi Seward and others and containing eight acres and one
 hundred perches with the usual allowance of six per ct. &

Surveyed the above described tract of land the third
 day of March A^o Dⁱ 1832 for Almon Goss by virtue of his warrant
 dated the thirteenth day of May A^o Dⁱ 1831

Henry Colt D.S.

To Jacob Spangler Esqr.

Surveyor General.

IN TESTIMONY that the above is a copy of the original remaining on file in
 the Department of Internal Affairs of Pennsylvania, made
 conformably to an Act of Assembly approved the 16th day of
 February, 1833, I have hereunto set my Hand and caused
 the Seal of said Department to be affixed at Harrisburg,
 this twentieth day of January 1905

Loac H. Brown
 Secretary of Internal Affairs.